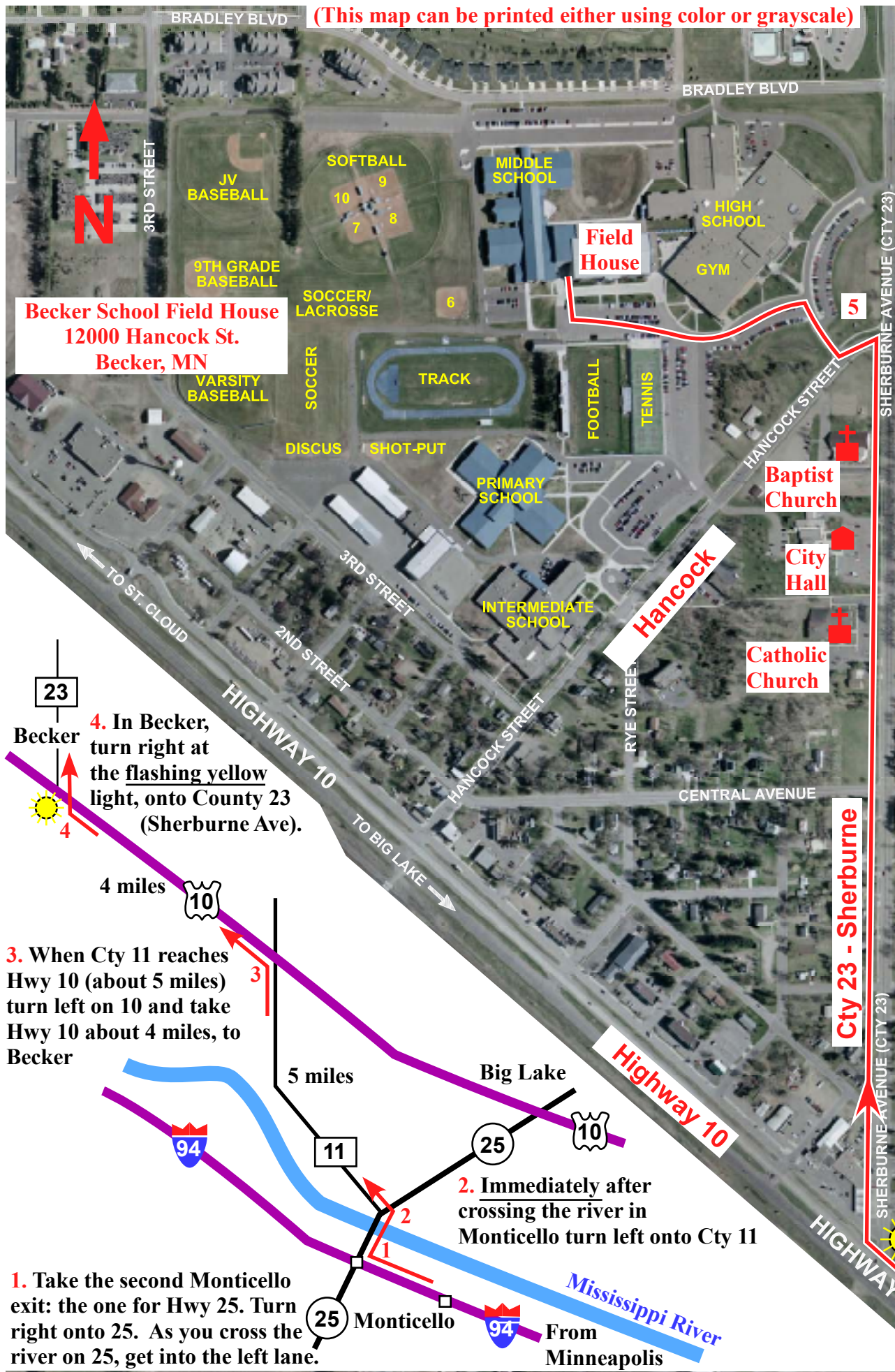


(This map can be printed either using color or grayscale)



Becker School Field House
 12000 Hancock St.
 Becker, MN

5. On 23 (Sherburne) go past the Catholic church, City Hall, and the Baptist church.

Take the next left (Hancock) but then immediately turn right into the school parking lot.

Now bear left, keeping the school on your right. You'll see a large, 3D, circular "Bulldog Country" logo on the field house.

The entrance for the electric cars is a garage door at the left (west) end of the field house.

4. In Becker, turn right at the flashing yellow light, onto County 23 (Sherburne Ave).

3. When Cty 11 reaches Hwy 10 (about 5 miles) turn left on 10 and take Hwy 10 about 4 miles, to Becker

1. Take the second Monticello exit: the one for Hwy 25. Turn right onto 25. As you cross the river on 25, get into the left lane.

2. Immediately after crossing the river in Monticello turn left onto Cty 11

Do not turn a half mile too soon, at the regular traffic light.

4. Turn right at the flashing yellow light.

Cty 23 - Sherburne

Highway 10

